

Mounting subplates type BA

single, for ISO valves size 06 to 32

BA-* are single subplates with ISO mounting surface for installation of Atos valves and they are provided with threaded ports for connection to pressure, tank and users lines. They are characterized by low pressure drops and they are specific for directional, flow and pressure control valves ISO size 06, 10, 16, 20, 25 and 32;

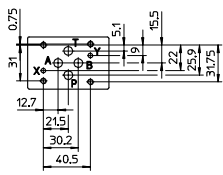
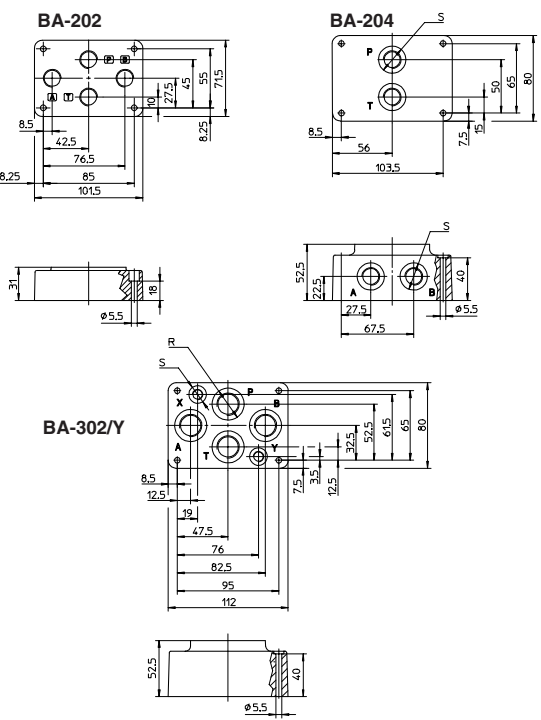
Special subplates or manifolds for customized applications are available upon request.

The set of screws for the valve installation on the BA subplate must be ordered separately, see the code SET SC-***** specified in the following sections.

1 TECHNICAL CHARACTERISTICS

Installation position	Any position
Operating pressure	Ports P, T, A, B = 350 bar see the technical table of the valves to be assembled
Ambient temperature	From -20°C to +70°C
Fluid	Hydraulic oil as per DIN 51524...535, for other fluids contact our technical office
Recommended viscosity	15 ÷ 100 mm ² /s - max allowed range: see the technical table of the valves to be assembled
Fluid contamination class	See the technical table of the valves to be assembled
Fluid temperature	See the technical table of the valves to be assembled

2 SINGLE STATION SUBPLATES FOR VALVES SIZE 06

<p>ISO 4401:2005 Mounting surface: 4401-03-03-0-05</p>  <p>Matching valves</p> <table border="1"> <tr><td>DH-00</td><td>SET SC-DHZ</td></tr> <tr><td>DH-01</td><td>SET SC-DHZ</td></tr> <tr><td>DH-02</td><td>SET SC-DHZ</td></tr> <tr><td>DH-04</td><td>SET SC-DHZ</td></tr> <tr><td>DH-05</td><td>SET SC-DHZ</td></tr> <tr><td>DH-08</td><td>SET SC-DHZ</td></tr> <tr><td>DH-09</td><td>SET SC-DHZ</td></tr> <tr><td>DH1</td><td>SET SC-DHZ</td></tr> <tr><td>DHE</td><td>SET SC-DHZ</td></tr> <tr><td>DHA</td><td>SET SC-DHZ</td></tr> <tr><td>DHW</td><td>SET SC-DHZ</td></tr> <tr><td>DHQ</td><td>SET SC-DHZ</td></tr> <tr><td>DLOH, DLEH</td><td>SET SC-DHZ</td></tr> <tr><td>QV-06</td><td>SET SC-QV</td></tr> <tr><td>RZMO</td><td>SET SC-DHZ</td></tr> <tr><td>RZGO</td><td>SET SC-DHZ</td></tr> <tr><td>DHZO</td><td>SET SC-DHZ</td></tr> <tr><td>DLHZO</td><td>SET SC-DHZ</td></tr> <tr><td>QVHZO-*.06</td><td>SET SC-DHZ</td></tr> </table> <p>Set of screw (to be ordered separately)</p>	DH-00	SET SC-DHZ	DH-01	SET SC-DHZ	DH-02	SET SC-DHZ	DH-04	SET SC-DHZ	DH-05	SET SC-DHZ	DH-08	SET SC-DHZ	DH-09	SET SC-DHZ	DH1	SET SC-DHZ	DHE	SET SC-DHZ	DHA	SET SC-DHZ	DHW	SET SC-DHZ	DHQ	SET SC-DHZ	DLOH, DLEH	SET SC-DHZ	QV-06	SET SC-QV	RZMO	SET SC-DHZ	RZGO	SET SC-DHZ	DHZO	SET SC-DHZ	DLHZO	SET SC-DHZ	QVHZO-*.06	SET SC-DHZ		<p>VERSIONS</p> <p>BA-202: basic version without ports X and Y; ports P, A, B, T (3/8") on the base.</p> <p>BA-204: basic version without ports X and Y; ports P and T (3/8") on the base; ports A and B (3/8") on the side.</p> <p>BA-302: basic version without ports X and Y; ports P, A, B, T (1/2") on the base.</p> <p>BA-302/Y: version dimensionally identical to the corresponding basic version with the addition of X and Y ports (1/8") on the base (see figure on the left). The /Y version is always used for DHZO and DLHZO valves when drain from port Y is required.</p> <p>BA-***/N: versions identical to the corresponding basic versions, but supplied without fixing bolts for type QVZO-*.06 valves (already equipped with fixing bolts).</p> <p>X and Y ports are only present in the /Y versions.</p> <table border="1"> <thead> <tr> <th>Code</th> <th>Ports (GAS) A,B,P,T (X-Y)</th> <th>Ø S [mm]</th> <th>Counterbore R [mm]</th> <th>Mass [Kg]</th> </tr> </thead> <tbody> <tr> <td>BA-202</td> <td>3/8"</td> <td>-</td> <td>-</td> <td>1,2</td> </tr> <tr> <td>BA-204</td> <td>3/8"</td> <td>-</td> <td>25,5</td> <td>16,5</td> </tr> <tr> <td>BA-302 (Y)</td> <td>1/2"</td> <td>(1/8")</td> <td>30</td> <td>16,5</td> </tr> </tbody> </table>	Code	Ports (GAS) A,B,P,T (X-Y)	Ø S [mm]	Counterbore R [mm]	Mass [Kg]	BA-202	3/8"	-	-	1,2	BA-204	3/8"	-	25,5	16,5	BA-302 (Y)	1/2"	(1/8")	30	16,5
DH-00	SET SC-DHZ																																																											
DH-01	SET SC-DHZ																																																											
DH-02	SET SC-DHZ																																																											
DH-04	SET SC-DHZ																																																											
DH-05	SET SC-DHZ																																																											
DH-08	SET SC-DHZ																																																											
DH-09	SET SC-DHZ																																																											
DH1	SET SC-DHZ																																																											
DHE	SET SC-DHZ																																																											
DHA	SET SC-DHZ																																																											
DHW	SET SC-DHZ																																																											
DHQ	SET SC-DHZ																																																											
DLOH, DLEH	SET SC-DHZ																																																											
QV-06	SET SC-QV																																																											
RZMO	SET SC-DHZ																																																											
RZGO	SET SC-DHZ																																																											
DHZO	SET SC-DHZ																																																											
DLHZO	SET SC-DHZ																																																											
QVHZO-*.06	SET SC-DHZ																																																											
Code	Ports (GAS) A,B,P,T (X-Y)	Ø S [mm]	Counterbore R [mm]	Mass [Kg]																																																								
BA-202	3/8"	-	-	1,2																																																								
BA-204	3/8"	-	25,5	16,5																																																								
BA-302 (Y)	1/2"	(1/8")	30	16,5																																																								

3 SINGLE STATION SUBPLATES FOR VALVES SIZE 10

ISO 4401:2005
Mounting surface: 4401-05-05-0-05

Matching valves

Set of screw
 (to be ordered separately)

DK-11	SET SC-DK/DP-1
DK-12	SET SC-DK/DP-1
DKE	SET SC-DK/DP-1
DKQ	SET SC-DK/DP-1
DKZOR	SET SC-DK/DP-1
DLKZOR	SET SC-DK/DP-1

BA-308/Y

BA-428/Y

BA-434/Y

VERSIONS

BA-308: basic version without ports X and Y; ports P, A, B, T (1/2") on the base.

BA-428: basic version without ports X and Y; ports P, A, B, T (3/4") on the base.

BA-434: basic version without ports X and Y; ports P and T (3/4") on the base; ports A and B (3/4") on the side.

BA-*Y:** versions dimensionally analogous to the corresponding basic versions with the addition of X and Y ports (1/4") on the base (see figure on the left).
 The /Y versions are always used for valves type DKZOR, DLKZO, when drainage from port Y is required.

X and Y ports are only present in the /Y versions.

Code	Ports (GAS) A,B,P,T	(X-Y)	Ø Counterbore S [mm]	R [mm]	Mass [Kg]
BA-308 (Y)	1/2"	(1/4")	30	21,5	2,5
BA-428 (Y)	3/4"	(1/4")	36,5	21,5	5,5
BA-434 (Y)	3/4"	(1/4")	36,5	21,5	8,5

4 SINGLE STATION SUBPLATES FOR VALVES SIZE 16

ISO 4401:2005
Mounting surface: 4401-07-07-0-05

Matching valves

Set of screw
 (to be ordered separately)

DP-21	SET SC-DP2
DP-24	SET SC-DP2
DP-25	SET SC-DP2
DPH-28	SET SC-DP2
DPH-29	SET SC-DP2
DPHI-2	SET SC-DP2
DPHE-2	SET SC-DP2
DPHA-2	SET SC-DP2
DPHW-2	SET SC-DP2
DPZO- ^x -2	SET SC-DP2

BA-518

BA-519

VERSIONS

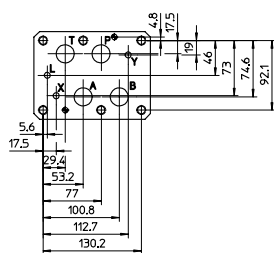
BA-518: basic version with ports P, A, B, T (1") and X, Y (1/4") on the base.

BA-519: basic version with ports P, T (1") and X, Y (1/4") on the base; ports A, B (1") on the side.

Code	Ports (GAS) A,B,P,T	X-Y	Ø Counterbore S [mm]	R [mm]	Mass [Kg]
BA-518	1"	1/4"	46	21,5	8
BA-519	1"	1/4"	46	21,5	8

5 SINGLE STATION SUBPLATES FOR VALVES SIZE 25

ISO 4401:2005
Mounting surface: 4401-08-08-0-05

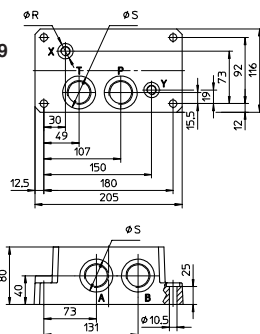


Matching valves

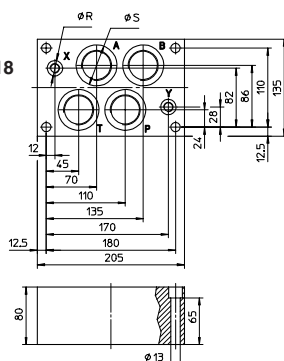
Set of screw
(to be ordered separately)

DP-41	SET SC-DP4
DP-44	SET SC-DP4
DP-45	SET SC-DP4
DPH-48	SET SC-DP4
DPH-49	SET SC-DP4
DPHI-4	SET SC-DP4
DPHE-4	SET SC-DP4
DPHA-4	SET SC-DP4
DPHW-4	SET SC-DP4
DPZO-*-4	SET SC-DP4

BA-509



BA-618



VERSIONS

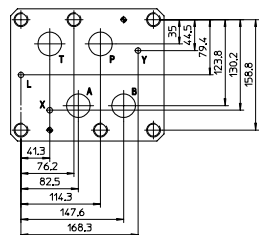
BA-509: basic version with ports P, T (1") and X, Y (1/4") on the base, ports A, B (1") on the side.

BA-618: basic version with ports P, A, B, T (1 1/4") and X, Y (1/4") on the base.

Code	Ports (GAS)		Ø Counterbore		Mass [Kg]
	A,B,P,T	X-Y	S [mm]	R [mm]	
BA-509	1"	1/4"	46	21,5	12,5
BA-618	1 1/4"	1/4"	57	21,5	13,5

6 SINGLE STATION SUBPLATES FOR VALVES SIZE 32

ISO 4401:2005
Mounting surface: 4401-10-09-0-05

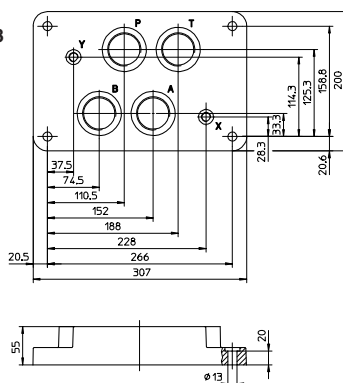


Matching valves

Set of screw
(to be ordered separately)

DP-64	SET SC-DP6
DP-65	SET SC-DP6
DPH-68	SET SC-DP6
DPH-69	SET SC-DP6
DPHI-6	SET SC-DP6
DPHE-6	SET SC-DP6
DPHA-6	SET SC-DP6
DPHW-6	SET SC-DP6
DPZO-*-6	SET SC-DP6

BA-708



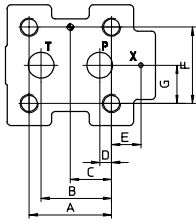
VERSIONS

BA-708: basic version with ports P, A, B, T (1 1/2") and X, Y (1/4") on the base.

Code	Ports (GAS)		Ø Counterbore		Mass [Kg]
	A,B,P,T	X-Y	S [mm]	R [mm]	
BA-708	1 1/2"	1/4"	63,5	21,5	17

6 SINGLE STATION SUBPLATES FOR PRESSURE CONTROL VALVE SIZE 10, 20 AND 32

**Mounting surface
ISO 6264: 1998**



Matching valves Set of screw
to be ordered separately

AGAM-10	SET SC-AGA-10
AGMZO-10	SET SC-AGA-10
AGAM-20	SET SC-AGA-20
AGMZO-20	SET SC-AGA-20
AGAM-32	SET SC-AGA-32
AGMZO-32	SET SC-AGA-32

size	A	B	C	D	E	F	G
10	53,8	47,5	22,1	22,1	-	53,8	26,9
20	66,7	55,6	33,4	11,1	23,8	70	35
32	88,9	76,2	44,5	12,7	31,8	82,6	41,3

**BA-306
Mounting surface
ISO 6264-06-09-0-97**

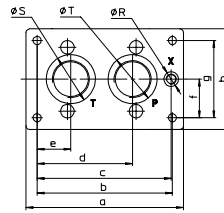
matching valves:
AGAM-10
AGMZO--10

**BA-506
Mounting surface
ISO 6264-08-13-0-97**

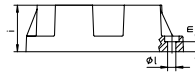
matching valves:
AGAM-20
AGMZO--20

**BA-706
Mounting surface
ISO 6264-10-17-0-97**

matching valves:
AGAM-32
AGMZO--32



**BA-306
BA-506
BA-706**



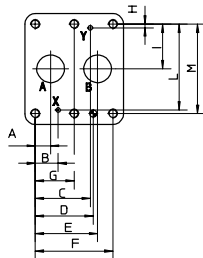
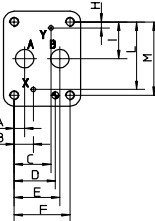
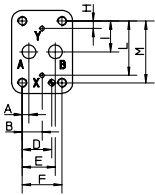
Code	a	b	c	d	e	f	g	h	i	l	m	Ø Blade		
												S	R	T
BA - 306	130	104	97	64,5	19,5	27	54	80	40	8,4	15	36,5	21,5	30
BA - 506	180	150	133,25	92,25	37,25	37,5	75	105	50	10,5	13	46	21,5	46
BA - 706	204	175	173,5	123,5	43,5	50	100	130,5	60	10,5	13	63,5	21,5	63,5

VERSIONS

BA-306, BA-506, BA-706: basic version, see figure on left and dimensional tables.

Code	size	Ports (GAS)			Mass [Kg]
		P	T	X	
BA - 306	10	1/2"	3/4"	1/4"	1,5
BA - 506	20	1"	1"	1/4"	3,5
BA - 706	32	1 1/2"	1 1/2"	1/4"	6

**Mounting surface
ISO 5781: 2000**



Matching valves Set of screw
to be ordered separately

AGI*-10(20)	SET SC-AGI
AGRL(E)-10(20)	SET SC-AGI
AGRCZO-10(20)	SET SC-AGI
AGI*-32	SET SC-AGI-32
AGRL(E)-32	SET SC-AGRL-32

**Mounting surface
ISO 5781-06-07-0-00**

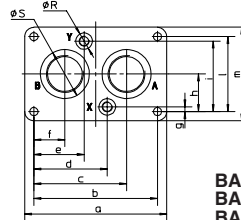
matching valves:
AGI*-10
AGRL-10
AGRLE-10
AGRZO--10

**Mounting surface
ISO 5781-08-10-0-00**

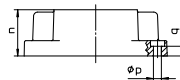
matching valves:
AGI*-20
AGRL-20
AGRLE-20
AGRZO--20

**Mounting surface
ISO 5781-10-13-0-00**

matching valves:
AGI*-32
AGRL-32
AGRLE-32



**BA-305
BA-505
BA-705**



Code	a	b	c	d	e	f	g	h	i	l	m	n	p	q	Ø Blade	
															S	R
BA - 305	113	90	67	45	45	23	8	33,3	58,7	66,7	90	30	10,5	10	30	21,5
BA - 505	133	110	82,5	64,5	45,5	27,5	6,4	39,7	73	79,4	102,5	42	10,5	10	46	21,5
BA - 705	184	160	120	95	65	40	6	48,5	91	97	121	60	10,5	13	63,5	21,5

VERSIONS

BA-305, BA-506 and BA-705: see figure on left and dimensional tables.

Code	size	Ports (GAS)			Mass [Kg]
		A	B	X-Y	
BA - 305	10	1/2"	1/2"	1/4"	1
BA - 505	20	1"	1"	1/4"	2
BA - 705	32	1 1/2"	1 1/2"	1/4"	7,5