

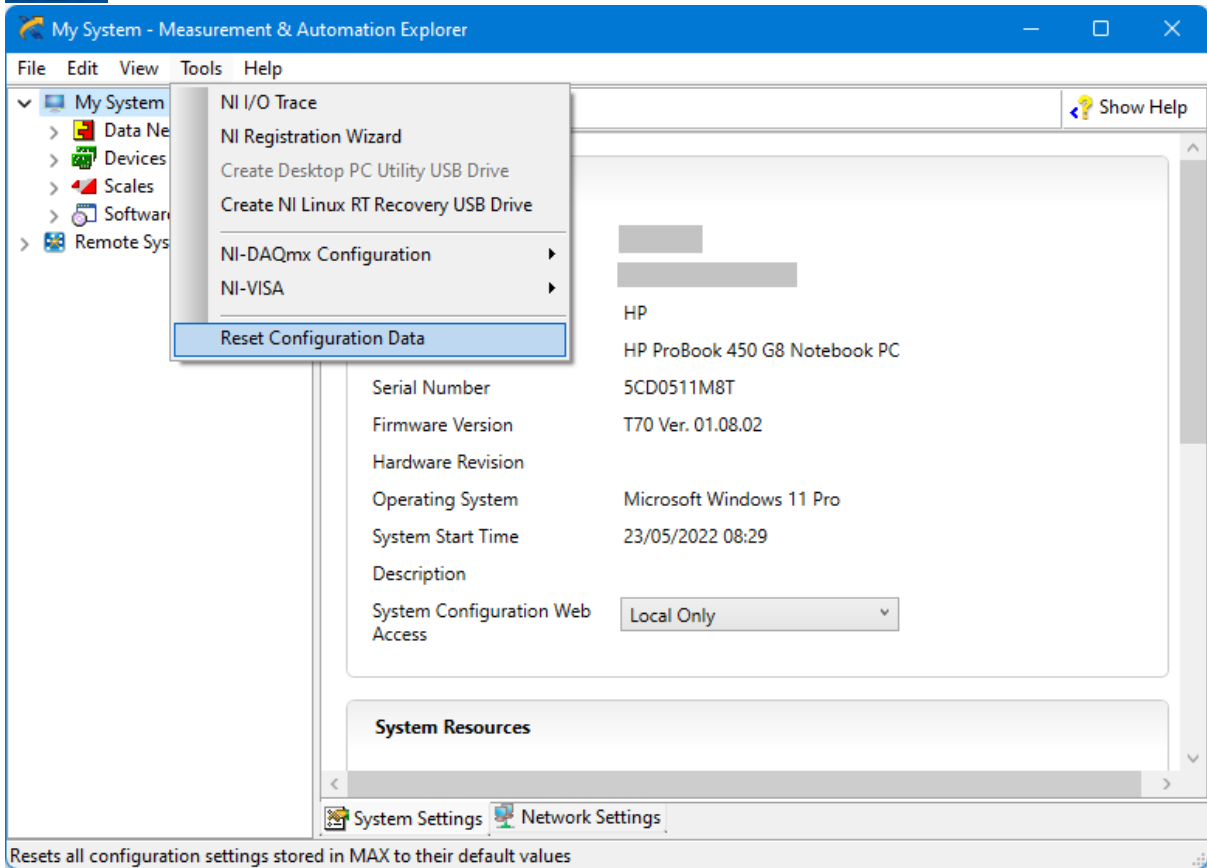
# **RC02-AAT INSTALLATION README**

---

From version 2.x to 3.x



- copy and share the database with Atos HQ (default is C:\Users\MY\_USER\AppData\Local\AtosAutoTest\AtosAutoTestDB.accdb). Suggested method is to use “wetransfer” web application.
- delete the software settings folder (default is C:\Users\MY\_USER\AppData\Local\AtosAutoTest\)
- open NI MAX software and reset the configuration



- uninstall the old version of the AtosAutoTest program
- install the new version of the AtosAutoTest program

