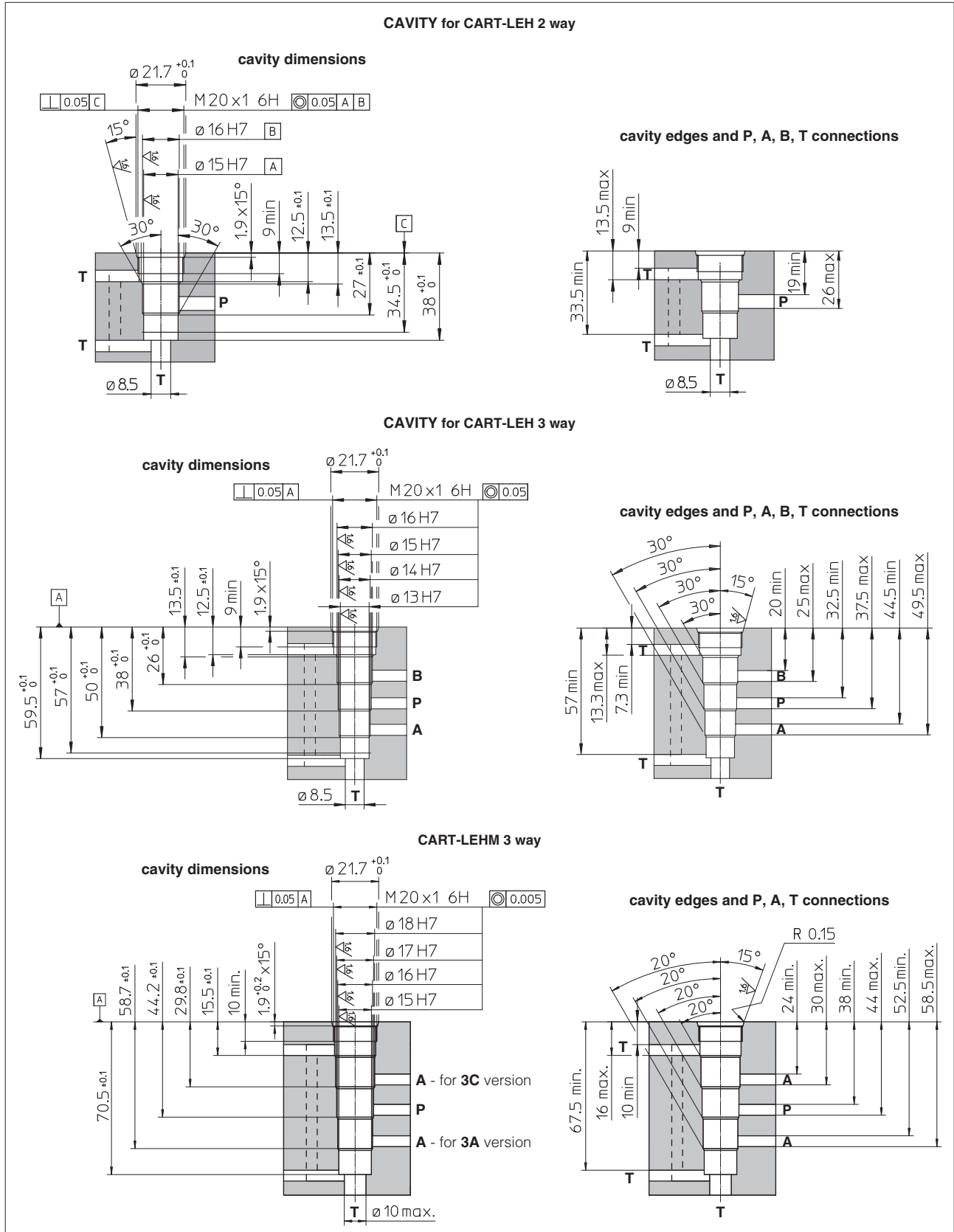


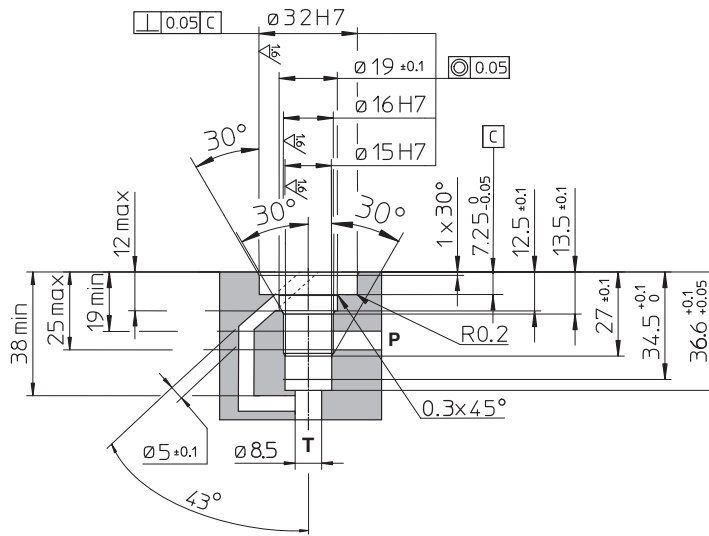
Mounting surfaces and cavities for cartridge valves

1 CAVITIES DIMENSIONS for 2 WAY and 3 WAY CARTRIDGE VALVES type CART-LEH, CART-LEHM [mm]



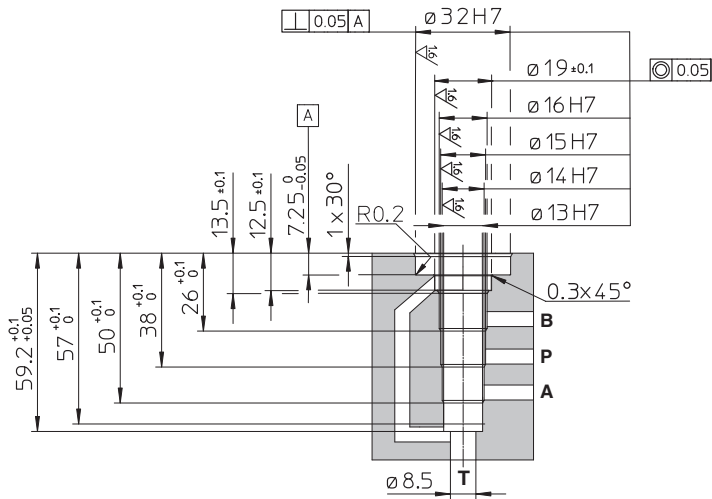
2 CAVITIES DIMENSIONS for 2 WAY and 3 WAY EX-PROOF CARTRIDGE VALVES type CART-LAH [mm]

CAVITY for CART-LAH 2 way

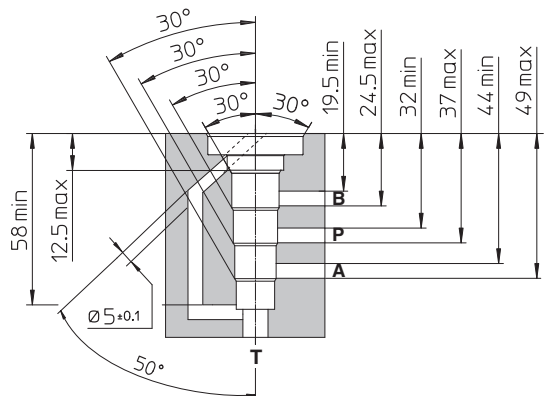


CAVITY for CART-LAH 3 way

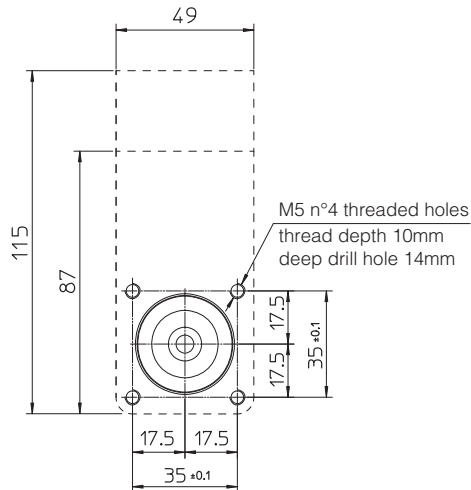
cavity dimensions



cavity edges and P, A, B, T connections



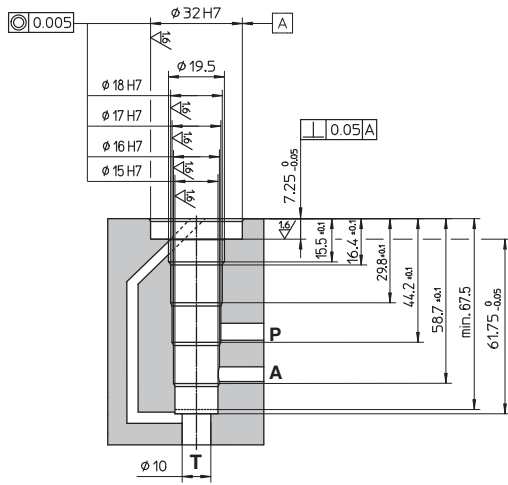
MOUNTING SURFACE for CART-LAH 2 and 3 way



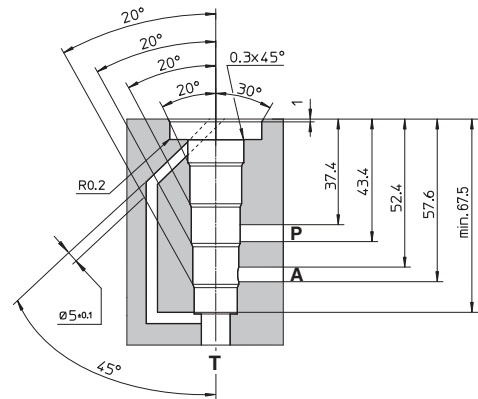
3 CAVITIES DIMENSIONS for 3 WAY EX-PROOF CARTRIDGE VALVES type CART-LAHM [mm]

CAVITY for CART-LAHM-3A

cavity dimensions

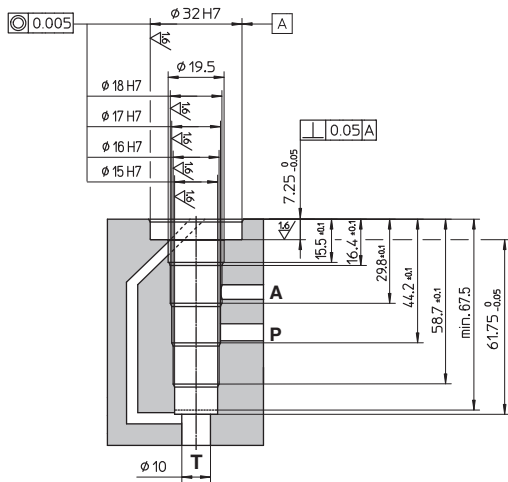


cavity edges and P, A, T connections

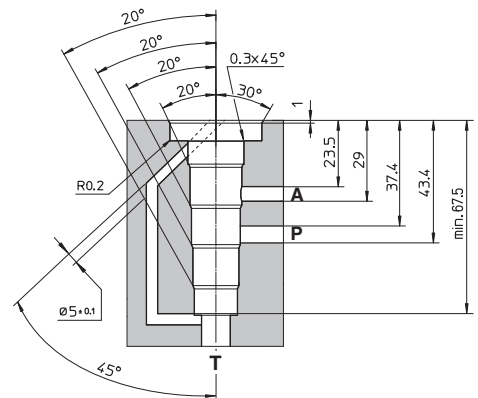


CAVITY for CART-LAHM-3C

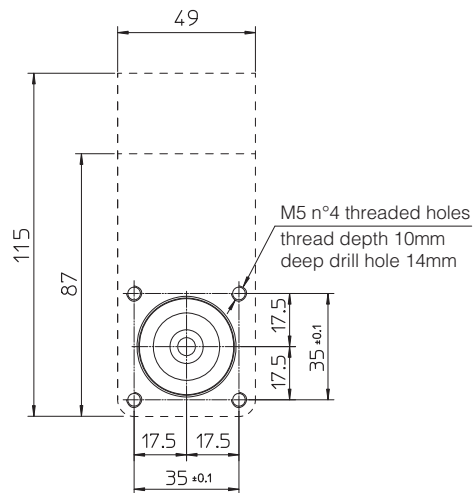
cavity dimensions



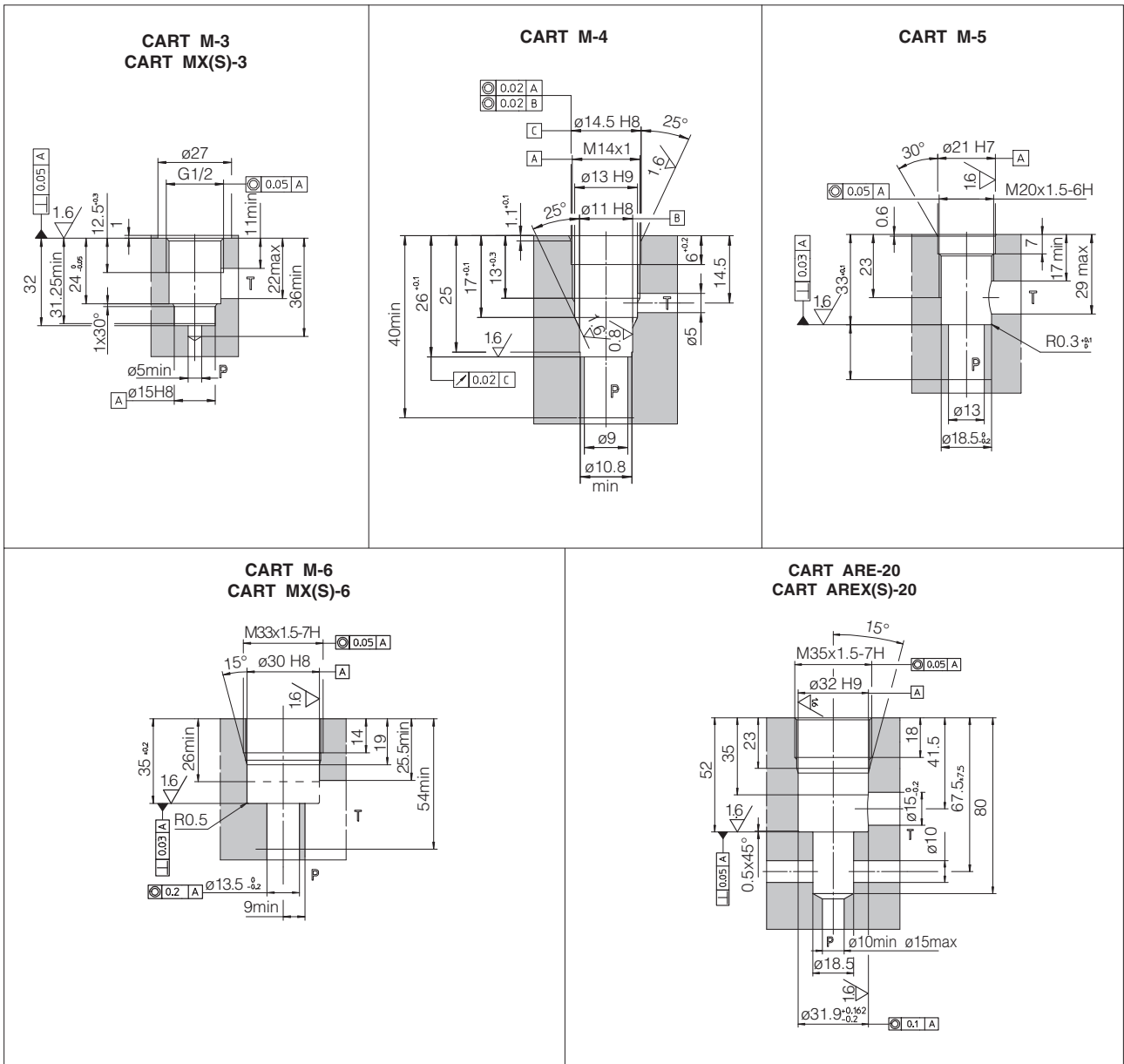
cavity edges and P, A, T connections



MOUNTING SURFACE for CART-LAHM 3 way

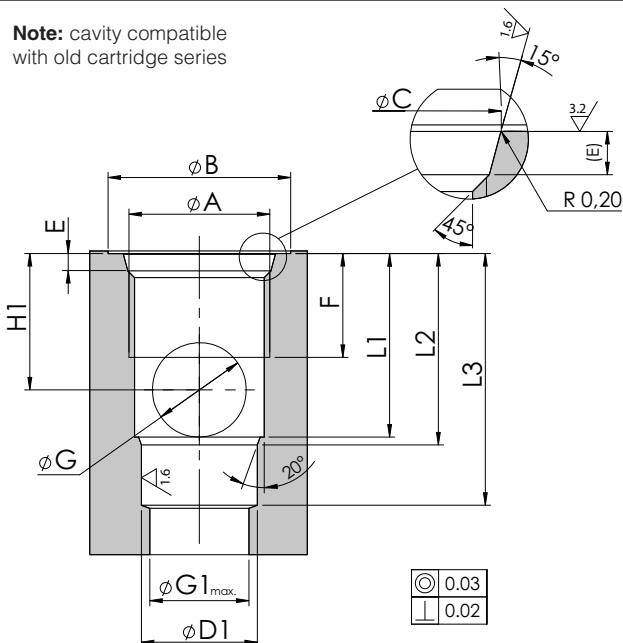


4 CAVITIES DIMENSIONS for CARTRIDGE PRESSURE RELIEF VALVES type CART [mm]

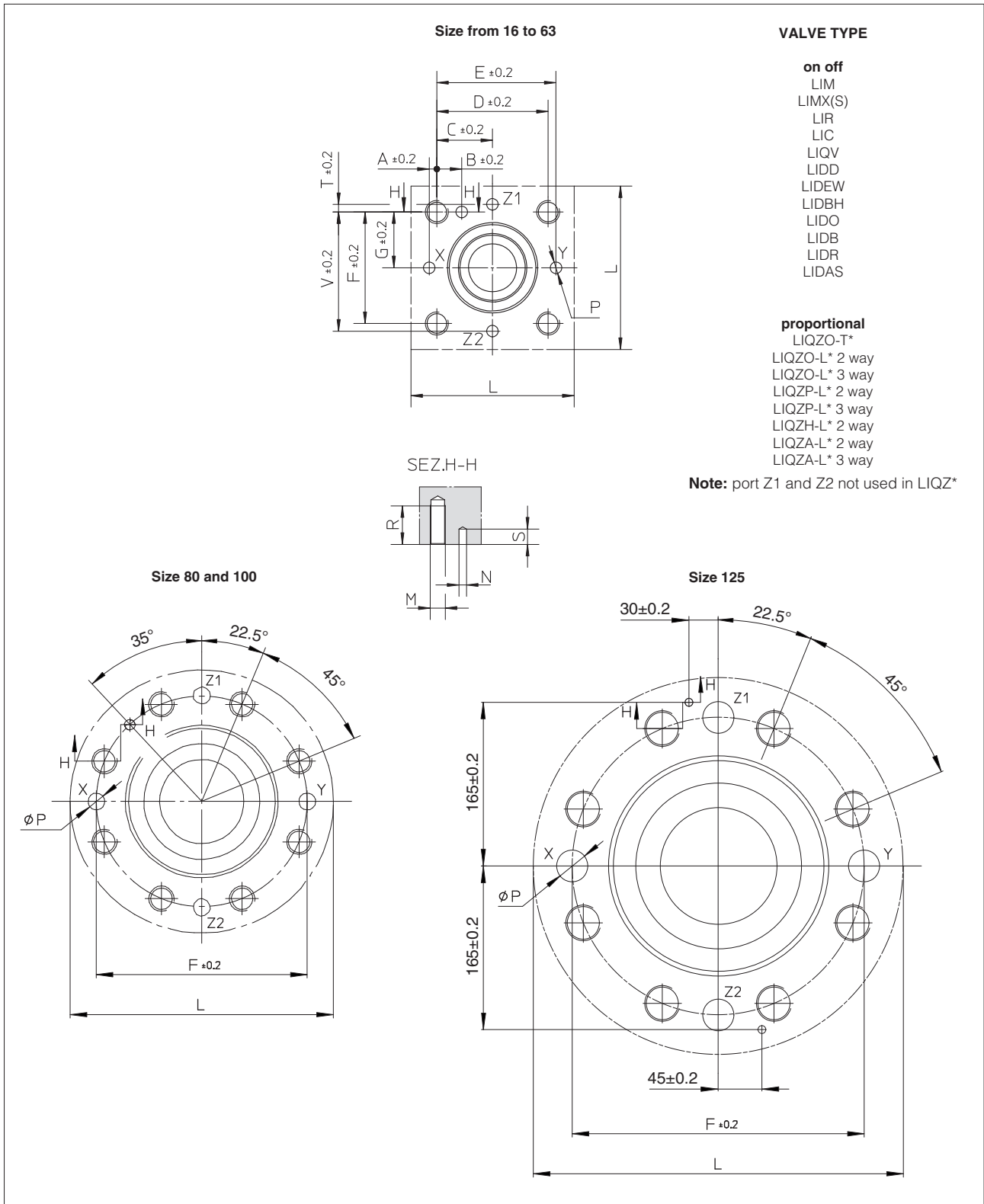


5 CAVITIES DIMENSIONS for 2 WAY SOLENOID CARTRIDGE VALVES type JO-DL [mm]

Note: cavity compatible with old cartridge series

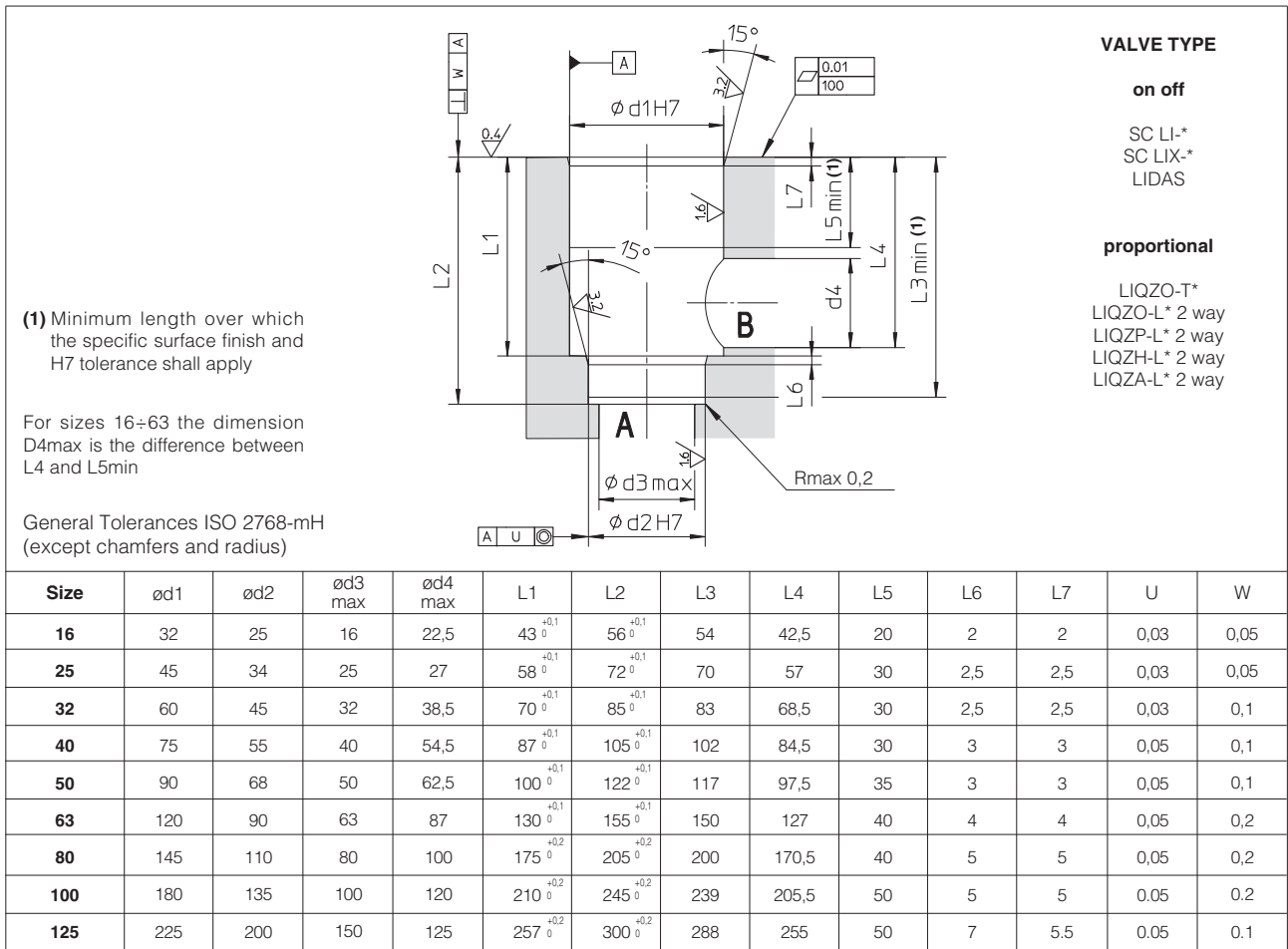


	JO-DL-4-2	JO-DL-6-2	JO-DL-10-2
A	3/4-16 UNF	7/8-14 UNF	1 5/16-12 UNF
B	26	30	42
C	20.6 ^{+0.1} ₀	23.9 ^{+0.1} ₀	35.5 ^{+0.1} ₀
D1	12.7 ^{+0.05} ₀	15.87 ^{+0.05} ₀	28.60 ^{+0.05} ₀
E	2.6 ^{+0.3} ₀	2.6 ^{+0.3} ₀	3.3 ^{+0.3} ₀
F	13	15	20
G	9	12	19
G1	12	15	24
H1	14	18	25
L1	19.1	24.2	33.5
L2	20.5	25.5	36
L3	29	34.5	49



Size	A	B	C	D	E	F	G	L min	M	Ø N	P max	R	S min	T	V
16	2	12,5	23	46	48	46	23	65	M8	4	4	20	6	2	48
25	4	13	29	58	62	58	29	85	M12	6	6	30	8	4	62
32	6	18	35	70	76	70	35	102	M16	6	8	38	8	6	76
40	7,5	19,5	42,5	85	92,5	85	42,5	125	M20	6	10	46	8	7,5	92,5
50	8	20	50	100	108	100	50	140	M20	8	10	46	8	8	108
63	12,5	24,5	62,5	125	137,5	125	62,5	180	M30	8	12	66	8	12,5	137,5
80	-	-	-	-	-	Ø200	-	Ø250	M24	10	16	50	10	-	-
100	-	-	-	-	-	Ø245	-	Ø300	M30	10	20	63	10	-	-
125	-	-	-	-	-	Ø300	-	Ø380	M36	8	32	78 (64,8 min)	10	-	-

7 ISO 7368 CAVITIES DIMENSIONS for 2 WAY CARTRIDGE VALVES [mm]



8 CAVITIES DIMENSIONS for 3 WAY CARTRIDGE VALVES [mm]

