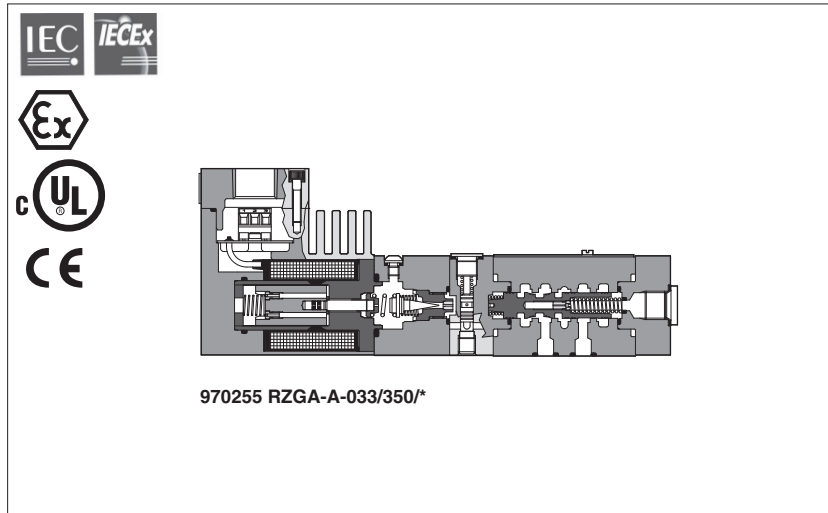


# Ex-proof proportional pressure control valves - Pmax 350 bar

Atex, IECEx or cULus certified

Available only on request



Ex-proof proportional pressure relief, compensator and reducing valves with pressure regulation range up to 350 bar, instead of 315 / 250 bar of standard executions.

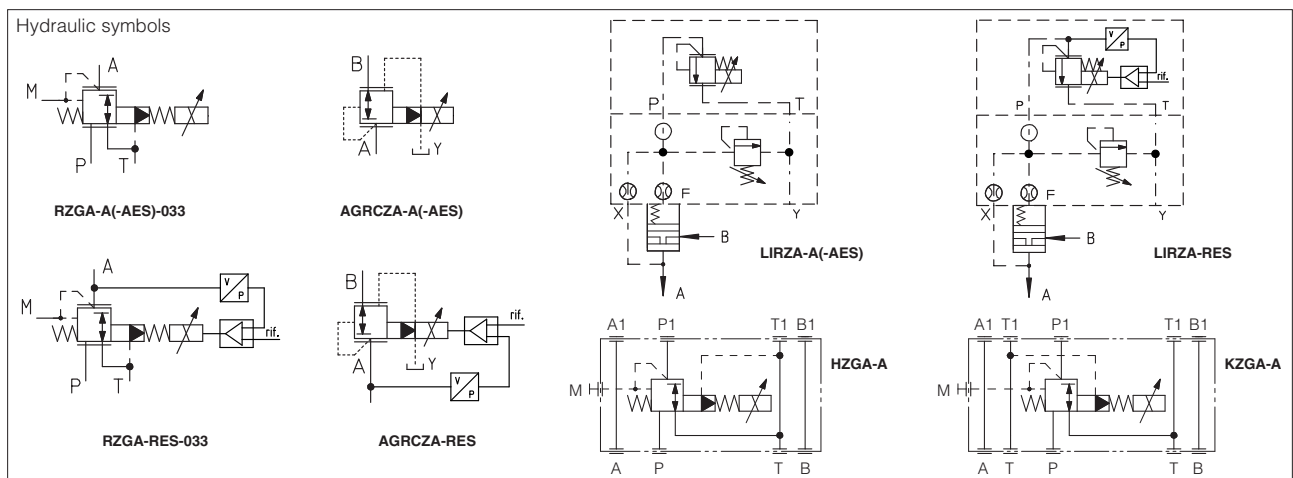
They are available with following certifications:

- ATEX 94/9/CE, protection mode Ex II 2GD Ex d IIC T6/T5/T4, Ex tD A21, IP67 (solenoids group II for surface plants with gas, vapors and dust environment, category 2, zone 1, 2, 21, and 22)
- ATEX 94/9/CE, protection mode Ex I M2 Ex d I (solenoids group 1 for surface, tunnels or mining plants)
- IECEx worldwide recognized safety certification, Ex d IIC T6/T4/T3, Ex tD A21 IP67
- cULus according to UL1002 and CSA 22.2 n°139-1982 Standard, Class I, Groups C&D (Groups IIA & IIB to NEC 505-7)
- Rostekhnadzor Russian certification Ex d IIC T6/T4/T3

## 1 MODEL CODE OF EX-PROOF PROPORTIONAL PRESSURE REDUCING VALVES

<b>97*255</b>	-	<b>***</b>	/	<b>350</b>	/	<b>***</b>
Special number for execution Pmax = 350 bar to be added to standard valves model code						Options (see standard valves model code)
<p>Model code:</p> <p><b>RZGA-A</b> (see tec. table FX040)</p> <p><b>RZGA-AES, -RES</b> (see tec. table FX050 for AES, FX060 for RES)</p> <p><b>HZGA-A</b> (see tec. table FX040)</p> <p><b>KZGA-A</b> (see tec. table FX040)</p> <p><b>AGRCZA-A</b> (see tec. table FX040)</p> <p><b>AGRCZA-AES, -RES</b> (see tec. table FX050 for AES, FX060 for RES)</p> <p><b>LIRZA-A</b> (see tec. table FX040)</p> <p><b>LIRZA-AES, -RES</b> (see tec. table FX050 for AES, FX060 for RES)</p>						Max regulated pressure = 350 bar

## 2 HYDRAULIC CHARACTERISTICS OF PROPORTIONAL PRESSURE REDUCING VALVES

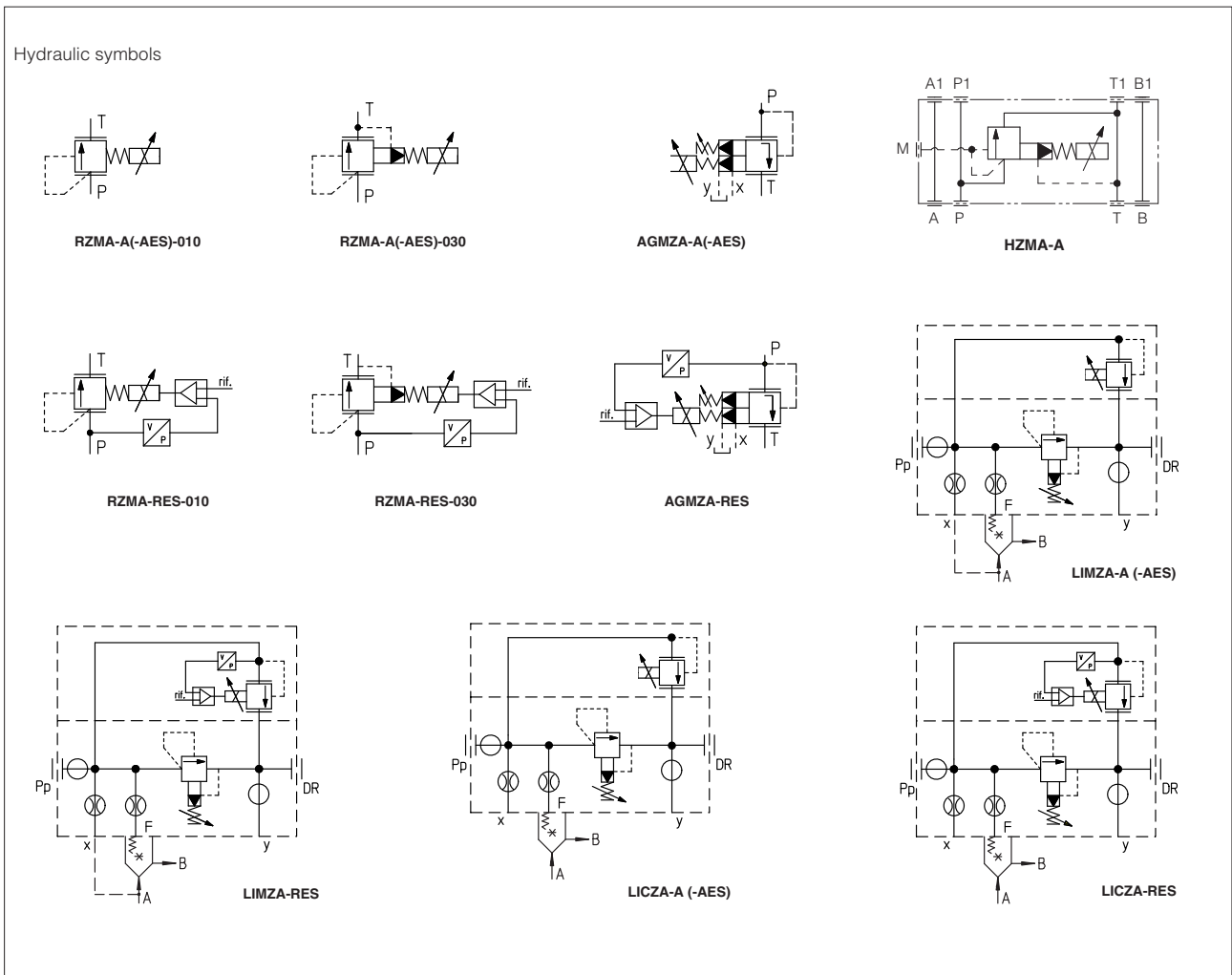


Valve model	RZGA	HZGA	KZGA	AGRCZA	LIRZA				
Size code	033	031	10	10	20	1	2	3	4
Valve size	06	06	10	10	20	16	25	32	40
Max regulated pressure[bar]	<b>350</b>								
Min regulated pressure [bar]	3	3	3	3	3	12	12	12	12
Max pressure at port P, A, B, X [bar]	350								
Max pressure at port T, Y [bar]	210								
Max flow [l/min]	40	40	100	160	300	160	300	550	800

**3 MODEL CODE OF EX-PROOF PROPORTIONAL PRESSURE RELIEF AND COMPENSATOR VALVES**

<b>97*255</b>	-	<b>***</b>	/	<b>350</b>	/	<b>***</b>
Special number for execution Pmax = 350 bar to be added to standard valves model code						Options (see standard valves model code)
Model code:						
<b>RZMA-A</b> (see tec. table FX010)						
<b>RZMA-AES, -RES</b> (see tec. table FX020 for AES, FX030 for RES)						
<b>HZMA-A</b> (see tec. table FX010)						
<b>AGMZA-A</b> (see tec. table FX010)						
<b>AGMZA-AES, -RES</b> (see tec. table FX020 for AES, FX030 for RES)						
<b>LIMZA-A</b> (see tec. table FX010)						
<b>LIMZA-AES, -RES</b> (see tec. table FX020 for AES, FX030 for RES)						
<b>LICZA-A</b> (see tec. table FX010)						
<b>LICZA-AES, -RES</b> (see tec. table FX020 for AES, FX030 for RES)						
						Max regulated pressure = 350 bar

**4 HYDRAULIC CHARACTERISTICS OF PROPORTIONAL RELIEF AND COMPENSATOR VALVES**



Valve model	RZMA		HZMA	AGMZA			LIMZA						LICZA					
Size code	010	030	030	10	20	32	1	2	3	4	5	6	8	1	2	3	4	5
Valve size	06	06	06	10	20	32	16	25	32	40	50	63	80	16	25	32	40	50
Min regulated pressure [bar]	8	7	7	11	11	10	11	11	10	13	15	15	18	12	11	11	15	18
Measured with flow [l/min]	1	10	10	25	25	25	20	40	75	100	200	300	450	20	40	75	100	200
Max regulated pressure [bar]	<b>350</b>																	
Max pressure at port P, A, B, X [bar]	350																	
Max pressure at port T, Y [bar]	210																	
Max flow [l/min]	4	40	40	200	400	600	200	400	750	1000	2000	3000	4500	200	400	750	1000	2000